

# **Wilmington Parks and Recreation Meeting Agenda** **January 5, 2015 - 6:00 pm** **Community Room – Municipal Bldg**

**Greetings**

**Roll call**

**Review and Acceptance of Minutes from Dec. 5, 2014**

**Old Business**

1. End of the year recap. Lori
2. Update on scheduled events; approval as needed: Lori
3. Grant Updates Lori
  - a. NatureWorks Round 20– Front basketball court crack repair and sealing completed. Reimbursements up to date. Next step is to get quotes on large basketball court and replace rims.
  - b. CDBG – completed.
  - c. ODNR Aquatic Education program 2014 – Kiosk installed, stocking -263 fish stocked 10/28/14, Passport to Fishing program, pond-side plants installed.
  - d. NatureWorks Round 21 – \$22,297 awarded.
  - e. USTA program for tennis court repair. Awaiting word. Requirements include additional painting.
  - f. NRAC 2015.
  - g. ODNR Aquatic Education program 2015 – fish stocking, handicapped fishing area/retaining wall, Passport to Fishing and Fishing With Mom programs. Submitted 12/23/14.
  - h. United Way 2015 – proposed scope
  - i. Water Quality/Anliot Fund
4. Update on proposed dog park project. Lori
  - a. Initial review of proposed rules
5. Status of Southeast COMMUNITY Park Transformation Project Lori
  - a. Tile art project completed and will be installed in April, weather permitting.
  - b. Proposal to re-roof the small shelter.
  - c. How should we celebrate completion?
6. Shelter Reservations - requests opened January 2 for Wilmington residents; Feb. 1 for all others
  - a. 2014 requests – of 236 requests, 56% were within city limits; 44% outside.
7. Update on skatepark project; mayor's suggestions Lori/CCSA rep
8. City Council/Park Committee Update Lori/Council Rep
9. Banner Program Update Lori
10. Status of Stuckey Farm Park Lori
  - a. Donation from Melvin Stone

**New Business**

1. Financial Update Lori
  - a. Establish new Line Item – Stuckey Farm Park Lori
  - b. Recommendation to Park Council Committee re alternative revenue source Lori
  - c. Status of receivables outstanding – Wilmington Inn, J&Ds, Wilmington Soccer Club Lori
2. Athletic Coordinator Update Lori
  - a. Basketball plans
3. Proposed Nature Playscape Project Lori
4. Maintenance Update Travis/Lori
  - a. Extension of parking near wooden playground.
  - b. Work on swale in Lytle Creek Preserve.
  - c. Observation deck in Lytle Creek Prairie
  - d. Tree work – priorities
  - e. Hale Trail
  - f. Peace Path Trail Bridges
5. No Child Left Indoors Programming status Lori
6. Lytle Creek Greenway
7. County Commissioners proposal for CMH Sale proceeds to benefit community
8. City-wide Job Evaluation project Lori
9. Utilization of Constant Contact for communications Lori
10. Wilmington Baseball Association – donation of baseball equipment valued at \$595 Lori
11. Champion Bridge – donation valued at approximately \$200 for SECP railing Lori

**Adjournment**

***“Your Community Parks – Discover...Play...Celebrate”***



**Wilmington Parks and Recreation Board Meeting Minutes**  
**December 1, 2014 Regular Meeting 6:00 P.M.**  
**Community Room City Building**

In attendance: Lori Williams, Director; Maria Butcher, Pres.; Leilani Popp, VP; John Stanforth; Loren Stuckert, city council member; Randi Milburn, city council member

Butcher, Greetings

Butcher, Roll Call Mac McKibben absent.

Old Business

Review and acceptance of Minutes from November 3, 2014 meeting, moved by Popp seconded by Butcher.

As the meeting opened, Butcher called for a moment of silence in honor of Roy Joe Stuckey. He was a true friend of the parks in the city of Wilmington and all parks in Clinton County and will truly be missed by all.

Williams gave us an update of 2015 scheduled events. Williams attended a meeting at the Library concerning the Easter Egg Hunt to be held at Galvin Park. She shared that the committee is working hard and it will be a huge event. The Last Mile program with the Health Dept. runs from Jan. through April and it mirrors the efforts put into training for the Flying Pig Marathon and it is aimed at school age children. It involves nutrition, training, reading books and other aspects of reaching your goal. The schools will be busing the students involved to the YMCA after school. The ending event will occur the last weekend of April and will be held at SECP. The Kiwanis Bike Rodeo will be in May, the Banana Split Festival in June as well as the Heatin' It Up Girls' Softball tournament. The July 4<sup>th</sup> celebration is still an unknown.

Williams gave updates for our Grants: NatureWorks Round 20—The Front Basketball court was sealed and the cracks repaired. More repairs will be made to the center court. John Stanforth has installed the benches. CDBG—the final piece of equipment (merry-go-round) has been installed and the final match was \$6159.47. We are completely done with this grant. ODNR—we are completely done with this grant with some reports still to be filed. NatureWorks Round 21—we should know late December or early January. This is the money for the Dog Park fence. USTA—we are just starting the process for this grant to help with tennis court repairs. NRAC 2015—Green Space, could be used to purchase land south of SECP. Can apply 2 times a year. Will be working with Wilmington College to acquire land. ODNR Aquatic Education program 2015—due in March-possible program "Fishing with Mom".

Dog Park Project Update: Grass has been planted and is growing well. \$11,000.00 has been raised so far and if we get the grant for the fence, the park is a done deal.

Southeast Community Park Transformation Project: John Stanforth installed a blue bench to continue to add to the colorfulness of the park. The title art project is completed and will be installed in April, weather permitting. Due to a leaking roof, SIF monies will be used to put on a new roof. We are looking to plan a celebration in April declaring completion of the project.

Shelter Reservations—the form has been posted online and will be opened to Wilmington residents Jan. 2<sup>nd</sup> and all other Feb. 1<sup>st</sup>.

Skatepark Project update: BMX bikers are trying to use the new half-pipe and it is not designed for bikes. Lori will talk with them and discuss with them the new trails they may use south of the trail. Other equipment is being placed on the new half-pipe and it will lead to damage. Trash is again an issue in the area.

City Council/Park Committee Update: Randi and Loren had nothing to report.

Banner Program Update: Williams showed us the form for 2015 Banners. There will be a mass e-mailing with the goal of 30 banners.

Status of Stuckey Farm Park: The parks made a commitment to Roy Joe to add gravel at the curb cut and mow twice a year. Follow up at the next meeting.

**NEW BUSINESS:**

2015 Meeting Schedule—It was decided that meetings would continue to be the first Monday of the month.

Financial Update: Transfer \$150.00 from Utilities 540.430.5212 to Vehicle Maintenance 540.430.5274(Vehicle Fuel). Popp moved we approve the above transfer, seconded by Butcher, motion carried. 2015 Budget Revisions—we do not have to carry over the skatepark monies as they are already spent. Capital Equipment needs to be changed from \$3,000 to \$3,300. SECP Transformation down \$8,000 to \$6,000 as we already have the bench. We have \$22,218 carryover this year and that comes from grants and donations. Popp moved we approve the amendments to the 2015 Budget, Butcher second, motion carried.

As Williams stated "Grants and Begging—that's what we do best!"

We have \$165,563.99 Unencumbered as of 10/31/14. Williams also pointed out other budget monies and where we are at this point in time.

Athletic Coordinator Update: Basketball registrations end this Wed., practices start Dec. 8<sup>th</sup>, and games begin the first week of Jan. Games will be played at the elementary schools and Church of Christ. The intern has been working on a youth sports inventory project which will be a one stop place to go and find information about all sport opportunities for youth in Clinton County.

Proposed Nature Playscape Project: Nathan Hale Trail at the park could be turned into a POD of Activities along the way. Turn the woods into a playscape area—a fun place for them to go and learn and be kids.

Summer programming ideas: Baseball camps, outdoor adventures, etc.

Mayor's recognition plans: Wants to do something for skatepark people and Audio Tour person.

Joe Hete wants to donate a tree and plaque in honor of Roy Joe Stuckey.

Maintenance Update: Still working on extension of parking lot near the playground. Large pots will be put at the front entrance of the park. Working on the swale in Lytle Creek Preserve—waiting for frozen ground. Plans for an observation deck in Lytle Creek Prairie.

No Child Left Indoors Programming: Owl Hike coming up this month. Something is planned for each month.

Lytle Creek Greenway: Nothing new—losing ash trees near pavilion.

Park Board went into executive session at 6:54 P.M. for discussion of personal. The Board came out of executive session at 7:00P.M. and no further action was taken. Popp moved to adjournment, Butcher, seconded.

Meeting lasted 51:49

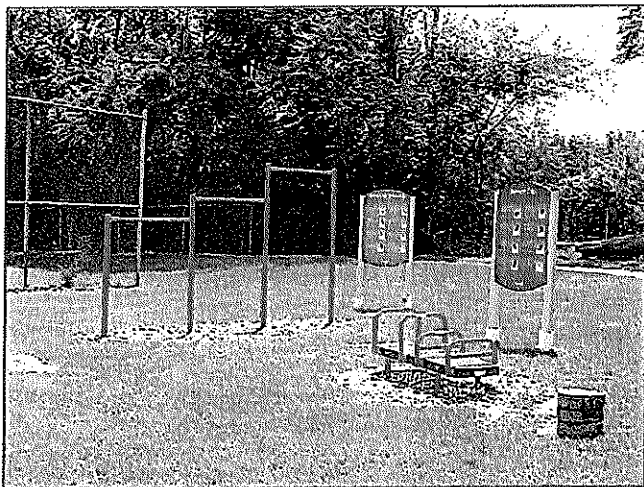
Next Meeting January 5, 2015 @ 6:00 in the Community Room.

# DRAFT - City of Wilmington Parks and Recreation Department 2014 Year in Review

## *Your Community Parks – Discover...Play...Celebrate*

There is no doubt that our community parks are valued and appreciated. We know that from both the comments we receive and the consistent use of our parks and trails. Our community values their parks, and park staff and the Park Board are committed to the continued improvement of our park assets and programs. The park system includes the J. W. Denver Williams Memorial Park, David Williams Memorial Park, Galvin Park, Southeast Community Park, Point Park, the Lytle Creek Preserve, the Luther Warren Peace Path, the 4-C Bicentennial Trail, and the tennis courts located at Wilmington High School.

This year has been an eventful year in many ways. We continued work on transforming the **Southeast Community Park**; including new play equipment, fitness equipment, resurfacing the basketball court and signage.

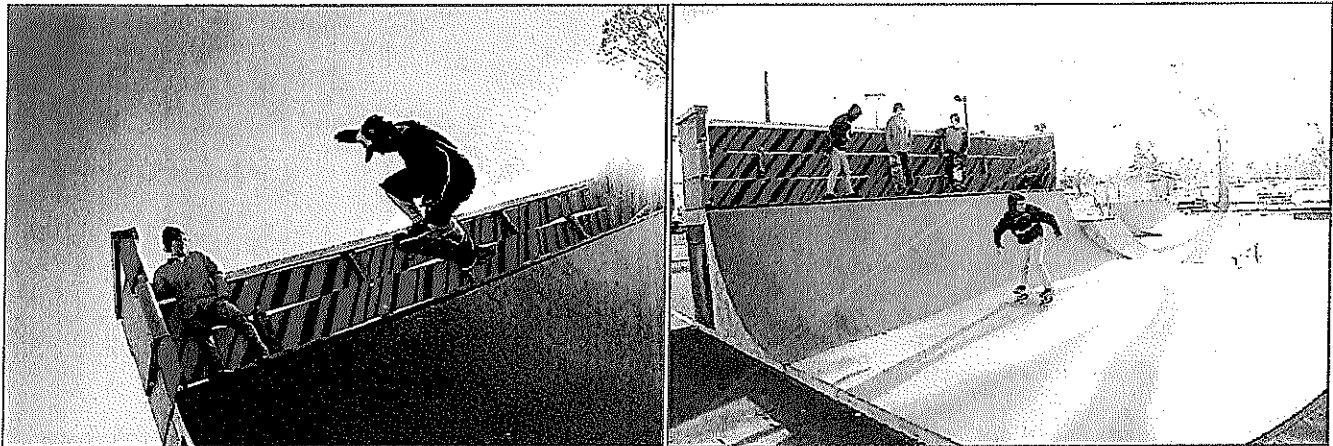


Most of the improvements were made possible by a grant from the Clinton County Foundation and a Community Development Block Grant, with active participation from community members.



With the kick start in the form of a \$2000 donation, we made great progress toward the vision of a leashless dog park in the **David Williams Memorial Park**. Volunteers have stepped forward to assist with design and fund-raising. The area was recently excavated and seeded and at the very end of 2014, we were notified that we will be receiving ODNR NatureWorks grant funding to assist with the fencing, typically the most costly component of a public dog park. We are optimistic that in the summer of 2015 we will be able to open this new park feature.

In early November we cut the ribbon on a new half pipe skate ramp located on the skate spot where an old tennis court was decommissioned in 2013. That effort was lead by Mark Noland and made possible with donations from the Clinton County Foundation Social Innovation Fund, Clinton County United Way, Clinton County Sheriff's Office DARE program, Friends of the Wilmington Parks, the Clinton County Skatepark Association, and many volunteers.



Highlights of the year from a facility standpoint also include several other improvements –the playground areas, rehabilitation of the restrooms and concession stand at **David Williams Memorial Park**, fish stocking and new educational kiosk at the pond at **J. W. Denver Williams Memorial Park**, additional benches and planting new trees.




---

In a partnership with Lytle Creek League of Conservators, the Lytle Creek Audio Tour was implemented along the **Luther Warren Peace Path** and **4-C Bicentennial Trail**. Developed and



produced by local conservator, John Deignan, the tour features smart-phone QR codes that access audio files covering a wide variety of nature-based content along the trails. There are also MP3 players and speakers available to users.

---

With continued pressure on the local economy, we will need to continue to be creative in developing funding sources and in cost-cutting, without sacrificing services the community expects and deserves. Resourcefulness with regard to utilizing volunteers, creating alliances and partnerships, and securing sponsorships and grants will be the key to our continued progress.

2014 partners have included the Clinton County Master Garden Volunteers, Wilmington Garden Club, Clinton County Skatepark Association, United Way of Clinton County, Clinton County Sheriff's office, Lowes Home Improvement, Ohio Department of Natural Resources, Ohio Division of Wildlife, David

Williams Family, Cornerstone Foundation, Clinton County Foundation, Wilmington Baseball Association, Wilmington High School Interact Club, Wilmington College, Beta Sigma Phi, local Boy Scouts, and many others.

The creation of the new Wilmington Park Legacy Fund through the Clinton County Foundation will allow park supporters to make charitable contributions to support the park system. The mission of the new charitable fund is to enable City of Wilmington Park system improvements and programs to benefit the community with an emphasis on leveraging the funds to have a multiplier effect with regard to grants, in-kind donations and volunteer activism.

---

### Athletics

2014 was a great year for athletics at the park. We implemented online registration and continued our pay-to-play sports policy this year, with our numbers growing or staying equal to past years. Park leagues included 205 adults, 1050 youth and was made possible in large part by the 84 volunteer coaches.

The year started off with basketball where we saw our numbers increase from the previous year. The season ran over a couple weeks because of cancellations of games due to snow. During basketball we had a change in the Athletic Coordinator position.

Spring soccer had an increase of 32% from the previous year. Spring was wet and cold at beginning of season and due to cold weather the season was pushed back a week. Once the season started, leagues were very competitive and with high school soccer players officiating, ran very smoothly.

Baseball had the highest numbers we have had in recent history. This year a practice schedule was created for the first time to help coaches and parents. There were many rain-outs and makeup games but the season was still completed by July 4th. Umpiring duty this year was done by high school baseball players and young adults with vast knowledge of the game.

Adult volleyball and softball numbers were consistent to numbers with previous years.

Fall soccer was played on just two nights this year. Numbers were similar to previous year. The season started in late August to avoid cold temperatures in mid to late October. The season was very successful and we look forward to continued growth in the program.

New this fall was our Pre-School Soccer Program. More than 30 pre-schoolers three years and older participated in the clinic-style program. We plan to continue this popular program.

We look forward to 2015. Our goal is to improve our sports programs, giving each kid an enjoyable and great learning experience.



## **Looking Forward**

In 2015 we have a full slate of opportunities. At **J. W. Denver Williams Memorial Park** we will be resurfacing a tennis court and one of the basketball courts, developing plans to improve the Nathan Hale Trail area, and creating a handicapped accessible fishing area. At the **Southeast Community Park** we will be installing additional play items and a tile art wall feature, made by City of Wilmington fourth and fifth graders under the direction of Jennifer Furrier, Tucson tile artist.

The **David Williams Memorial Park** will have a new leashless dog park and walkway.

We will be re-decking the **Peace Path** bridges, adding features to the **Lytle Creek Nature Preserve**, and beginning the development of the future **Stuckey Farm Park**.

Thanks to the hard work and generosity of many, we have wonderful park assets. We must be determined in our resolve to care for the park legacy that was formally begun with the 1950 dedication of the **J. W. Denver Williams Memorial Park** and to continue to improve the facilities and natural resources in our care.

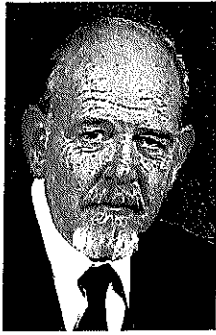
These are your parks - let us know how you would like to get involved – parks do indeed build community!

Submitted by Lori Kersey Williams

Parks and Recreation Director

January 2015

<b>2015 PARKEVENTS</b>				
March 28	Easter Egg Hunt	Galvin Park	Library Staff	
April 25	26th Mile Program	TBD - Trails and SECP?	Renee Quallen	
May 2	Southern Ohio Rounders Tournament	CEP	Lance Smaltz	
May 9	Kiwanis Bike Rodeo	Parking Lots and Shelter area	Terri Thobaben	
June 12-13	Banana Split Festival	Entire Park	Duane Weyand	
June 19-21	Heatin' It Up Tournament	All diamonds	Mike Ledford	
June 27	Relay for Life		Peggy McPherson	
July 4	Fourth of July Festivities		TBD	
July 11	Passport to Fishing	Pond and Shelters in a.m.	Lori/Rick Kneisel	
August 7	Insect Discovery	Shelter D and Nathan Hale Trail	Lori/Rick Kneisel	
August 8	Fishing with Mom (dependent on getting Aquatic Education Grant)	Pond and Shelters in a.m.	Travis/Lori	



# Sture Fredrik Anliot Fund

as presented by Clinton Streamkeepers

## Notice of Funding Availability

The Clinton Streamkeepers (a 501(c) 3 organization) is pleased to offer grant funds available from our Sture Fredrik Anliot Fund. This fund is "an endowed, restricted gift for the improvement of water quality in the Little Miami River and its tributaries in Clinton and Greene Counties of Ohio."

Dr. Sture Fredrik "Fred" Anliot was a Professor of Biology at Wilmington College where he taught for 35 years. Fred was well-liked and highly respected by those who knew him, including colleagues and students. He studied the watershed extensively, authoring articles and the book "The Vascular Flora of Glen Helen, Clifton Gorge and John Bryan State Park". Fred lived simply and was frugal with his money, he passed on December 14, 2012 and his generosity is the basis of this grant funding.

### Cycle:

1/1/15	Grant Application Available
2/15/15	Grant Application Due
3/13/15	Grants Awarded

### Eligibility:

Organizations who may receive the grant can include, but are not limited to, civic groups, environmental organizations, nonprofits, schools or educational institutions, and watershed groups.

### Eligible Projects:

Projects may include, but are not limited to: stream cleanup, water quality monitoring, buffer strip installations, wetland restoration, vernal pool and other habitat efforts, etc.

### Amount Available:

Grants in various amounts may be awarded.

More information can be found at [www.greenalliancecc.com](http://www.greenalliancecc.com)

Submit your application to: [staff@clintoncountyrpc.org](mailto:staff@clintoncountyrpc.org) or mail to:  
Clinton Streamkeepers c/o Clinton County Foundation  
P.O. Box 831  
Wilmington, Ohio 45177

Any questions on the application and projects can be emailed to: [mgrant@erinet.com](mailto:mgrant@erinet.com)



## Sture Fredrik Anliot Fund, as presented by Clinton Streamkeepers

### Grant Application Form

*(answer the following questions, use additional lines and pages if necessary)*

Project Title:

Application Date:

Are you a tax-exempt organization:      Yes      No

Mission Statement (brief statement of what you trying to accomplish):

Project Location:

Timeline of your Project:

1. How does this project improve water quality in the Little Miami watershed?

2. What are the measurable goals/objectives for your project? How will you determine if the project succeeded?

3. Why is this project needed in the community?

4. What is the capacity of your organization to implement the project, including names and contact information of those individuals involved?



## Sture Fredrik Anliot Fund, as presented by Clinton Streamkeepers

Total budget:

Amount Requested from this Grant:

What will you be providing in funds or services?

What items is this grant funding?

If this project is ongoing, will you fund or coordinate future activities?

A written report will be required at the conclusion of your project. In the event this project is multi-year- annual reports will be required. If your project is not completed, all grant monies must be returned. No grant funding is to be used for salary.

As a duly authorized representative for my organization, I hereby state that the information contained herein is accurate and true.

Signed: \_\_\_\_\_

Title: \_\_\_\_\_

I/we approve of the release of grant related information to the media.

Signed: \_\_\_\_\_

Title: \_\_\_\_\_

I/we understand Clinton Streamkeepers has complete discretion to make or withhold grants, I/we release its board, agents and employees from any and all claims, of any kind and all damages, known or unknown, either developed or undeveloped arising out of the rejection of this application.

Signed: \_\_\_\_\_

Title: \_\_\_\_\_

# **DRAFT - Proposed City of Wilmington Parks and Recreation Dog Park Rules**

We welcome responsible dog owners and well-behaved dogs to our leashless dog park. This area has been made possible through the efforts of many volunteers, donors, Ohio Department of Natural Resources NatureWorks and City of Wilmington Parks and Recreation.

## **GENERAL DOG PARK RULES**

- Dog park hours are sunrise to sunset daily (unless closed for maintenance or weather).
- The facility may be closed during and/or after inclement weather to protect the turf.
- Park users and dog owners/handlers assume all risk related to use of the dog park.
- All other general park rules and city ordinances must be obeyed.
- The small/shy dog area is designated for dogs/puppies weighing 29 pounds or less and extremely shy/older dogs.
- The large dog area is for dogs/puppies weighing 30 pounds or more.
- Professional dog trainers may not conduct their business in the dog park.
- Dog grooming is not permitted in the dog park.
- People who violate the park rules are subject to removal from the park and may be prohibited from using the facility.
- Limit of two dogs per person per visit.
- Dogs shall be under voice control of their owner/handler at all times.
- Dogs in heat, dogs with fresh wounds, and puppies under four months of age are prohibited.
- Spike or pinch collars are not allowed in the park.
- Any dog exhibiting aggressive behavior must be removed immediately.

## **OWNERS**

- Owners/handlers are to stay within the park and within view of their dogs.
- By bringing a dog in the park, the owner/handler certifies that their dog(s) have been properly inoculated (free of contagious conditions, diseases, parasites).
- Owners/handlers are liable for damage and injury inflicted by their dog.
- Owners/handlers must have a visible leash at all times.
- Owners must immediately clean up the canine fecal materials and properly dispose of the waste.
- Owners must stop their dogs from digging and should immediately fill any holes dug by their dog.
- Owners waive liability to the city for any injury or damage caused to or by pets while using the park.

## **BEHAVIOR**

- Dog park gates must be closed immediately after entering or exiting the facility.
- Excessive barking is prohibited. Dogs barking excessively must be removed.
- Dogs showing aggression toward people or other animals must be removed from the park.
- Dogs are not permitted to remain on leash once they are inside the dog park.
- No food for humans or dogs (except "one gulp" training sized dog treats) allowed within fenced area.

## **CHILDREN**

- Children under the age of 10 years are prohibited from entering the fenced dog park area.
- Children between the ages 10-16 years old must be accompanied by an adult, who agrees to be solely responsible for the child's proper behavior and safety.
- Children are not allowed to run with or chase after dogs in the dog park.

# Thank You!

This Wilmington Skate Court is the first step in the development of an outstanding Skate Park for the enjoyment of Wilmington skaters.

We consider this to be an early step in the long-term goal of having a Skate Park that will be recognized as a professional class facility. This facility and future expansions will be dedicated to

## Sgt. Steven Conover.

Steven was an avid skater who died in Iraq in the services of his country in 2003.

Also, Thanks to the many individuals and organizations that made this facility possible:

Mark Noland  
Sean Gibson  
John Finkbone  
Chris Gilbert  
Ben Bullard

Jennifer Stewart  
Joshua Johnson  
Rick Stanforth  
John Stanforth  
Joe Hinman

Max Knapp  
Chris Ciders  
Eric Guindon  
Mark Matrka  
Lori Williams

The Clinton County Foundation  
The Clinton County Sheriff's Dare Program  
Friends of the Wilmington Parks  
The United Way of Clinton County  
Lowe's Home Improvement  
Wilmington High School Interact Club





## Preliminary Play Scape Ideas

1	Water Access	[JD] paddlewheel station	
2	Mounds		
3	"Loose Parts"	Bamboo, ornamental grass, wood cookies	
4	Rock area		
5	Walkable stumps		
6	Zip line		
7	Edge prairie		
8	Food forest/edible perennials		
9	Worm; compost area		
10	Sand		
11	Accoustic area/chimes, etc.		
12	Olfactory area		
13	Seating area		
14	Tunnel	[jd] mini-network, connected	
15	Bird viewing area		
16	Granite columns		
17	Giant Spider	(google for examples)	
18	Mimic bird nests	<a href="http://inhabitat.com/tres-birds-workshops-artistic-wooden-nests-mimic-bird-habitat-in-vail-co/vail-nests-trees-bird-architecture-2/?extend=1">http://inhabitat.com/tres-birds-workshops-artistic-wooden-nests-mimic-bird-habitat-in-vail-co/vail-nests-trees-bird-architecture-2/?extend=1</a>	Budget?



## History of Sale

### CLINTON MEMORIAL HOSPITAL SOLD IN 2010

#### DETAILS OF SALE

The Clinton County Commissioners sold Clinton Memorial Hospital to Regional Care Hospital Partners in 2010 for \$82 million dollars. Clinton County will receive approximately \$54 million dollars after debt and expenses.

Regional Care Hospital Partners' negotiated sale terms called for annual payments of \$1.7 million dollars over a ten-year period. It will be six more years before the full amount of the proceeds will be received by the county commissioners.

Clinton County has also received escrow payments from Regional Care Hospital Partners. Additionally, RegionalCare contributed \$500,000 to the Clinton County YMCA.

#### Administration of Hospital Money

"It will be six years before the full amount of the proceeds will be received by the county commissioners"

#### Foundation

It is my recommendation to establish a Charitable Foundation (County Commission Foundation). The Foundation shall consist of the three county commissioners who are elected by the people, and who are accountable to the public, as the sole members.

A three person advisory board will be appointed with the President of the Board of County Commissioners serving as a member. This layered foundation approach will ensure compliance with State of Ohio auditing principles.

The single most important advantage to utilizing a foundation is the ability to invest the funds and realize better return. For the last several years, the County has, and continues to see a return of less than 1%. Private investments range, but have in recent years been consistently more than 5-6% (and better).

"It is my recommendation the Foundation consist of the three commissioners who are elected by the people, and who are accountable to the public, as the sole members."

#### Application Process

Each application for funding by the County Commission Foundation will be considered on a case-by-case basis. Money cannot be used for staffing, salaries, operations or costs associated with personnel.

Each application must be submitted to the Advisory Board who will recommend funding approval to the County Commission Foundation who will retain final approval and veto authority over any spending.

The money belongs to the people of Clinton County. It is my recommendation to designate the use of 'hospital money' to benefit the majority of the county taxpayers, based on qualifying criterion described in this document, and to preclude funding enterprises that competes with private businesses or promotes special interests.

This plan gives the taxpayers a chance to see the money at work in their lifetimes, and the lifetimes of their children and grandchildren. The taxpayers of Clinton County today have endured much and this plan has them, as a broad community, 100 percent in focus," Haley said.

The United States government spends trillions of dollars annually on public assistance programs designed to assist those less fortunate in our society. It is my belief the proceeds from the sale of Clinton Memorial Hospital should be used to benefit the taxpayers who have supported the institution over the years.

Although I was not a commissioner at the time of the sale of Clinton Memorial Hospital, I am now one of three commissioners responsible for the management of these funds. I recommend using the \$3 million dollars from the Former Hospital Board, adding \$2 million dollars more for a total of \$5 million dollars to advance the health, safety, and general welfare of the citizens of Clinton County. The County Commissioners can move additional money at any time to the Foundation to increase the principle.

An additional approximate \$2.5 million dollars from the Capital Improvement Fund will be set aside for infrastructure repairs and renovation of the Clinton County Courthouse.

The funds held by the Former CMH Board are restricted under Ohio law (Ohio Revised Code 339.06) for use in promoting health, safety and general welfare of the community.

The commissioners will place the money in a restricted account, aside from the General Fund, and then move to the Foundation. These funds will not be used for county operations, personnel, or any function otherwise supported by tax money.

#### Specific Uses of the Money

- Agriculture
- Arts and Entertainment
- Community Improvement and Beautification
- Economic Development
- Education
- Health
- History and Historic Preservation
- Grants
- Substance Abuse Prevention

#### Education

Approximately \$3 million dollars will be available to the four county high schools: Blanchester, Clinton Massie, East Clinton and Wilmington. Grants will be made in the form of endowments on a case-by-case basis. This method would help to alleviate any concerns about how it could affect recipients' other funding sources.

Money cannot be used for salaries, personnel, or benefits.

### **Safety and Security**

School safety is on the mind of every parent. Funding will assist school administrators with forming threat-assessment teams that can identify and address conflicts before they lead to acts of aggression. School-based prevention programs with emphasis placed on recognizing the influence of violence in movies and video games that increases violent thoughts and aggressive feelings.

Funding will assist administrators with designing well-conceived, well-rehearsed emergency response plans, and to include security screens, locks, monitors, cameras, safe rooms and other security equipment to insure the safety of our children.

### **Facilities**

Funding will be provided to strengthen capital improvement of school sports facilities such as baseball diamonds, stadium seating and parking, basketball and tennis courts, and soccer fields.

Each community through their schools will decide what they need. For example, if a school within Clinton County decides they want an indoor walking and running track that the community can access as well, that decision rests with the local school. This will place health and wellness within each community, rather than only one centralized location, and will not exclude most taxpayers as do some private entities.

Each school district will decide if they want to build an indoor recreation center with basketball courts open to the community. Funds can subsidize transportation costs to and from the recreation centers.

### **Scholarships**

College Scholarships may be awarded to prepare students for careers in medicine, nursing and education. In order to retain local talent, it shall be stipulated those who are awarded scholarships to work in a certain field or specialty must remain in Clinton County for a certain period of time. If recipients do not complete their specific education programs or do not return to Clinton County, any scholarship they received will become a loan with interest attached.

### **Music and Arts**

Research shows students who participate in music often have higher levels of achievement. This funding will assist the county high schools with Music and Arts programs.

### **Nutritious and Appealing School Meals**

Funding will foster an environment that promotes healthy eating habits for all children and provides them with nutritious and appealing school meals.

### **Health Programs**

Funding from the County Commission Foundation will focus on substance abuse, programs that facilitate positive learning and healthy behavior that enhance healthy development.

### Physical Activity Programs

Funding will assist with planned instruction that promotes lifelong physical activity designed to develop physical fitness.

<b>Education</b>	
Blanchester (to include school safety)	725,000.00
Clinton Massie (to include school safety)	725,000.00
East Clinton (to include school safety)	725,000.00
Wilmington (to include school safety)	725,000.00
College Scholarships	40,000.00
Sports Medicine for Athletic Teams	25,000.00
Sports, Arts, Nutrition, and Substance Abuse Prevention	80,000.00
<b>Schools totals</b>	<b>3,045,000.00</b>

### Health

A healthy community needs a healthy workforce upon which to build its economy.

The former Health Foundation of Clinton County recently changed its name to HealthFirst for Clinton County. According to a recent news release, HealthFirst supports pharmaceutical, and transportation needs of area residents with documented need for assistance identified and screened by the social workers and case managers at Clinton Memorial Hospital. Funds are distributed directly to those vendors.

It is my recommendation funding be provided to HealthFirst, which can be added to HealthFirst's already existing \$3.8 million dollars. Additionally, it is my suggestion that scholarships be available to nursing and medical students from Clinton County who are pursuing careers in medicine, and whose desire is to practice locally.

Additional money will be granted for fitness, wellness initiatives for county residents, including the Patient Medical Assistance Program, the Silver Sneakers Program, Diabetes Education, Children and Elderly Dental Programs, Wellness Plans and for the Community Health assessment, improvement and strategic plan through the Clinton County Board of Health. Money cannot be used for salaries, personnel, or personnel benefits.

<b>Health</b>	
Health First	160,000.00
Nursing Scholarships	50,000.00
Medical Scholarships	50,000.00
Patient Medical Assistance Program	50,000.00
Diabetes Education Support	25,000.00
Children's Dental (County Health Department)	50,000.00
Clinton County Wellness Plans	30,000.00
County Wellness Programs (Silver Sneakers Program)	120,000.00
Elderly Dental Care	50,000.00
Community Health Assessment, Improvement and Strategic Plan	15,000.00
<b>Health Totals</b>	<b>600,000.00</b>

## History and Historic Preservation

### Murphy Theatre

Constructed in 1919, the Murphy Theatre is a Clinton County landmark for people of ages. As the grand facility approaches its 100<sup>th</sup> Anniversary, the infrastructure of the building is in dire need of renovation.

Bringing visitors to Clinton County for special events invigorates the local economy. The purpose of this funding is to bring major entertainment acts twice a year, which would rejuvenate excitement for live shows at the Murphy Theatre and add economic spark to businesses throughout Clinton County.

### The Clinton County Courthouse

The Clinton County Courthouse is a national treasure. Our generation is the caretaker of this magnificent building. The interior and exterior is in need of renovation. There is water leakage around the dome, causing damage to our historic courtrooms. On the outside, mortar is crumbling from the stone. It will be necessary to hire experts in historic renovation to repair the damage and return the courthouse to its rightful place of grandeur. The approximate \$2.5 million dollars needed to fund this project are appropriated in the Capital Improvement Fund.

### County Historical Societies

Historic preservation is more than simply saving and restoring old buildings and sites of historic importance. Preservation enriches the community by maintaining tangible connections to our past; as well as, promoting economic development through tourism and providing a multitude of educational opportunities. Funding will ensure county history preservation efforts remain strong.

History and Historical Preservation	
Blanchester Historical Society	15,000.00
Wilmington Historical Society	15,000.00
Sabina Historical Society	15,000.00
Clinton County Courthouse Renovation (Capital Improvement)	
Murphy Theatre Preservation	300,000.00
County Historical Presentations	5,000.00
<b>Historical totals</b>	<b>350,000.00</b>

## Community Improvement and Beautification

The purpose for providing these funds to Clinton County towns and villages is for community improvements and quality of life issues not supported by tax dollars. A primary focus will be on the downtown corridors of county towns and villages, connecting neighborhoods together.

The County Villages and the City of Wilmington may apply for the money to promote their towns by improving signage, seasonal decorations, sound systems downtown to play music during business hours, decorative lighting and for other appropriate activity and entertainment purposes.

Main Street Wilmington has a goal to create vibrant dining, entertainment and shopping opportunities, and make Wilmington a weekend destination for tourists from throughout the Southwest Ohio area.

Funding from the County Commission Foundation could prod residents to congregate downtown to dine, shop and socialize on weekend nights in Wilmington and the county villages.

Main Street Wilmington has proposed building a small bricked area on the corner of the Courthouse lawn (corner of Main and South Streets) for use as a gathering place and entertainment. The area would be tastefully designed, much like the Veterans Memorial on the opposite corner of the Courthouse.

Possible attractions to bring residents downtown throughout the county include:

- Music and dancing
- Sound system around downtown to play music during business hours
- Lights on roof lines of buildings to be turned on during special events and Christmas season

It is important to keep our towns appealing. Money will be granted to purchase decorative benches. The Tree Commission in Wilmington and the county villages will be supported, along with other beautification programs.

Additionally, it is important to rid our communities of blighted property. Money will be made available for appropriate property demolitions.

### Sports and Recreation

We suggest this money be used to supplement capital projects or instances where funds cannot be raised. It is the intention of these grants to benefit the communities-at-large. For example: building playgrounds, baseball diamonds, soccer fields, or other sporting complexes where the community can use them for city recreation or the community-at-large.

<b>Community Improvement and Beautification</b>	
County Parks and Recreation Projects	150,000.00
Seasonal Decorations	100,000.00
County Village Improvement and Beautification	115,000.00
Main Street Wilmington	50,000.00
Downtown Music	50,000.00
Benches for Downtowns	50,000.00
Decorative Lighting for Villages and Towns	25,000.00
County Tree Commissions	25,000.00
Property Demolitions	50,000.00
<b>Community totals</b>	<b>615,000.00</b>

### Economic Development

Clinton County Economic Development is supported by a \$500,000.00 gift given by Regional Care Hospital Partners from the sale of Clinton Memorial Hospital to promote the growth of industry and job creation in Clinton County. The additional funding will be set aside for bringing additional businesses to Clinton County. Final approval for all funding decisions pertaining to economic development will be made by the Clinton County Director of Economic Development. Bringing jobs to Clinton County is our first priority.

<b>Economic Development</b>	
Economic Development	20,000.00
<b>Financial Obligation Totals</b>	<b>20,000.00</b>



## Agriculture

Clinton County has a rich agricultural heritage. It is important to support the research, development and promotion of agricultural and medical products being produced within the county. This research could benefit every resident of Clinton County.

<b>Agriculture</b>	
Research, Development, and Promotion of Agricultural Products	30,000.00
	<b>30,000.00</b>

## Substance Abuse Prevention

Drug abuse has become a rampant social problem crossing all boundaries of society. Prevention and enforcement are key components of our efforts to eliminate drug abuse.

Clinton County Common Pleas Court Judge John W. "Tim" Rudduck has received monies from the State of Ohio to initiate a Drug Court in Clinton County. We support these efforts.

<b>Substance Abuse Prevention</b>	
Drug Court and Substance Abuse Prevention Programs	75,000.00
Drug Task Force	25,000.00
<b>Drug Totals</b>	<b>100,000.00</b>

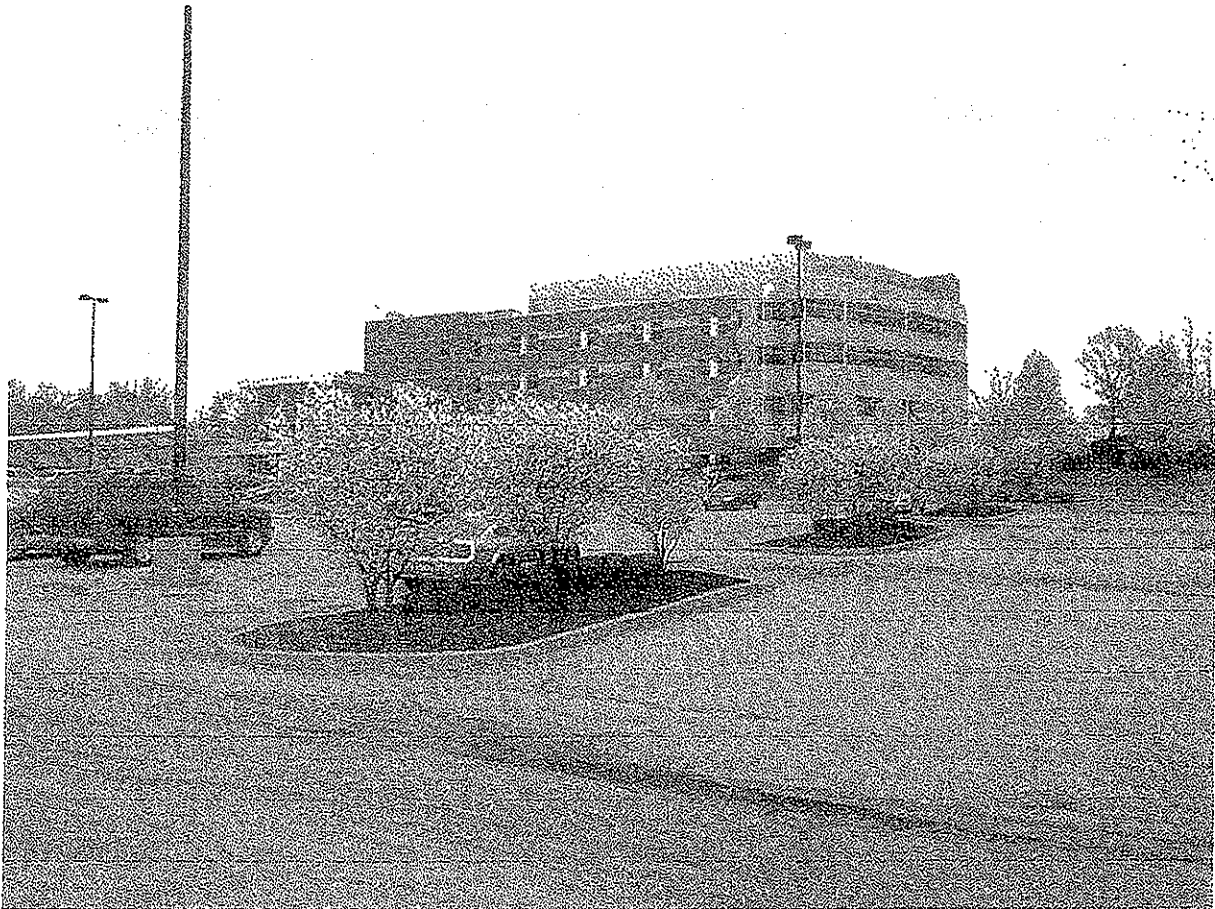
## Grant Opportunities

Clinton County is spending millions of dollars within our Juvenile Justice system. However, the majority of our young people are law abiding citizens, and I believe strongly this group is the future of our community.

The 4-H Program, 4-H Camp Scholarships, the Clinton County Fair, Holidazzle and the Clinton County Corn Festival are some of the successful programs in operation within Clinton County. We want to support those programs.

<b>Grant Opportunities</b>	
Animal Welfare (Humane Societies)	20,000.00
4-H Extension	14,500.00
Clinton County Fair Board	5,000.00
4-H Extension Camp Scholarships	5,000.00
Hometown Holidazzle	5,000.00
The Clinton County Corn Festival	5,000.00
<b>Misc. payments totals</b>	<b>54,500.00</b>

# MASTER PLAN TO STRENGTHEN CLINTON COUNTY



December  
29, 2014

For the public purpose of improving the health, safety, and general welfare of the community